

Welcome to the 1st CMS Webinar!

Coastal Modeling System Basics



Mitchell E. Brown

Co-PI, Program Management work unit

Julie Dean Rosati

Program Manager

Jim Walker

HQ Navigation Business Line Manager

Jeff Lillycrop

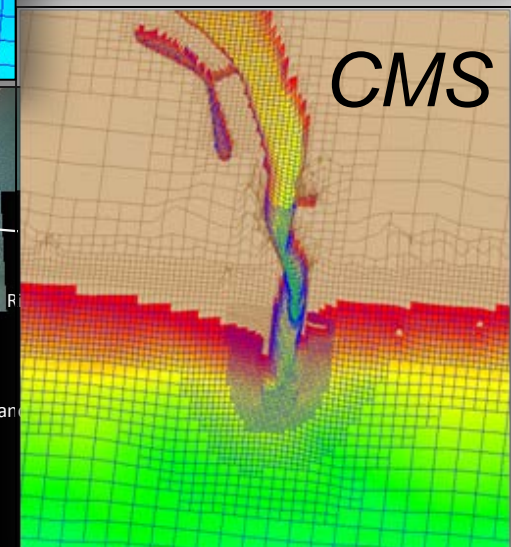
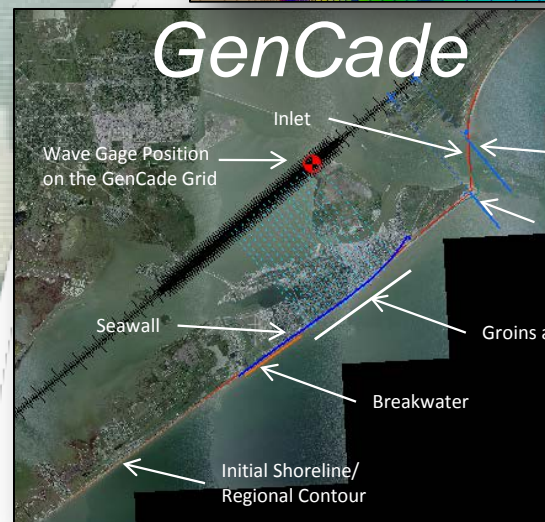
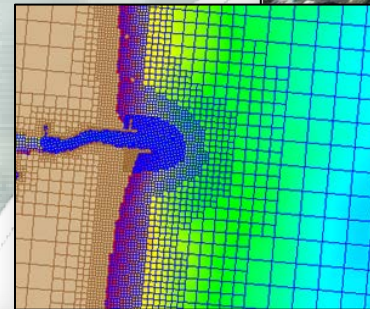
Technical Director

Eddie Wiggins

Associate TD



US Army Corps of Engineers
BUILDING STRONG[®]



Webinar will be mostly presentation, demonstration and some question/answer.

- Audio available through computer speakers only.
- All attendees' microphones will be muted.
- Attendees can raise their hand and type in a question.
 - There will be 1-2 other CIRP staff to assist with answering questions during the webinar.
- Instructor may use extra time (if any) to go back over some topics.
- Instructor audio will be recorded and made available at the webpage listed below.

11 June 2012 - Day 1

- Introduction to SMS interface
- Introduction to the Coastal Modeling System (CMS)
- Working with Bathymetry (multiple surveys)

12 June 2012 - Day 2

- Conclude Working with Bathymetry (multiple surveys)
- Creating CMS-Flow grids (Variable)
- Creating CMS-Flow grids (Telescoping)

13 June 2012 - Day 3

- Conclude Creating CMS-Flow grids (Telescoping)
- Boundary Conditions
- Model Parameters and Model Check

14 June 2012 - Day 4

- Creating CMS-Wave grids (Variable only)
- Creating Wave Spectra from bulk criteria
- Importing Wave Spectra information from Wave Gauge/Buoy

15 June 2012 - Day 5

- Steering
- Validation (Comparison with Measurements)
- Post-processing

<p>Mitchell Brown, ERDC</p>	<p>mitchell.e.brown@erdc.dren.mil</p>	<p>601-634-4036</p>
<p>Alex Sanchez, ERDC</p>	<p>alejandro.sanchez@usace.army.mil</p>	<p>601-634-2027</p>
<p>Tanya Beck, ERDC</p>	<p>tanya.m.beck@erdc.dren.mil</p>	<p>601-634-2603</p>



CIRP website: <http://cirp.usace.army.mil>

CIRP wiki:

http://cirpwiki.info/wiki/Main_Page



Coastal Inlets Research Program

Brief Overview: Mission

Reduce O&M costs at coastal navigation projects

- Develop PC tools to support O&M practice
- Transfer technology and products

Tools and Models:

*CMS, CPT, CSMART,
GenCade, Inlet Res Model,
RMAP, Shoaling Toolbox,
CMS pre/post processing tools*

Tech Transfer:

*Webinars, Workshops, Website,
Wiki, Mobile apps, Video clips,
TRs, TNs, JPs*



*R&D: Berm migration, Mixed-grain sediment transport,
Long-term morphology change, Sand sharing relationships for inlets*