

Coastal Modeling System

Advanced Topics



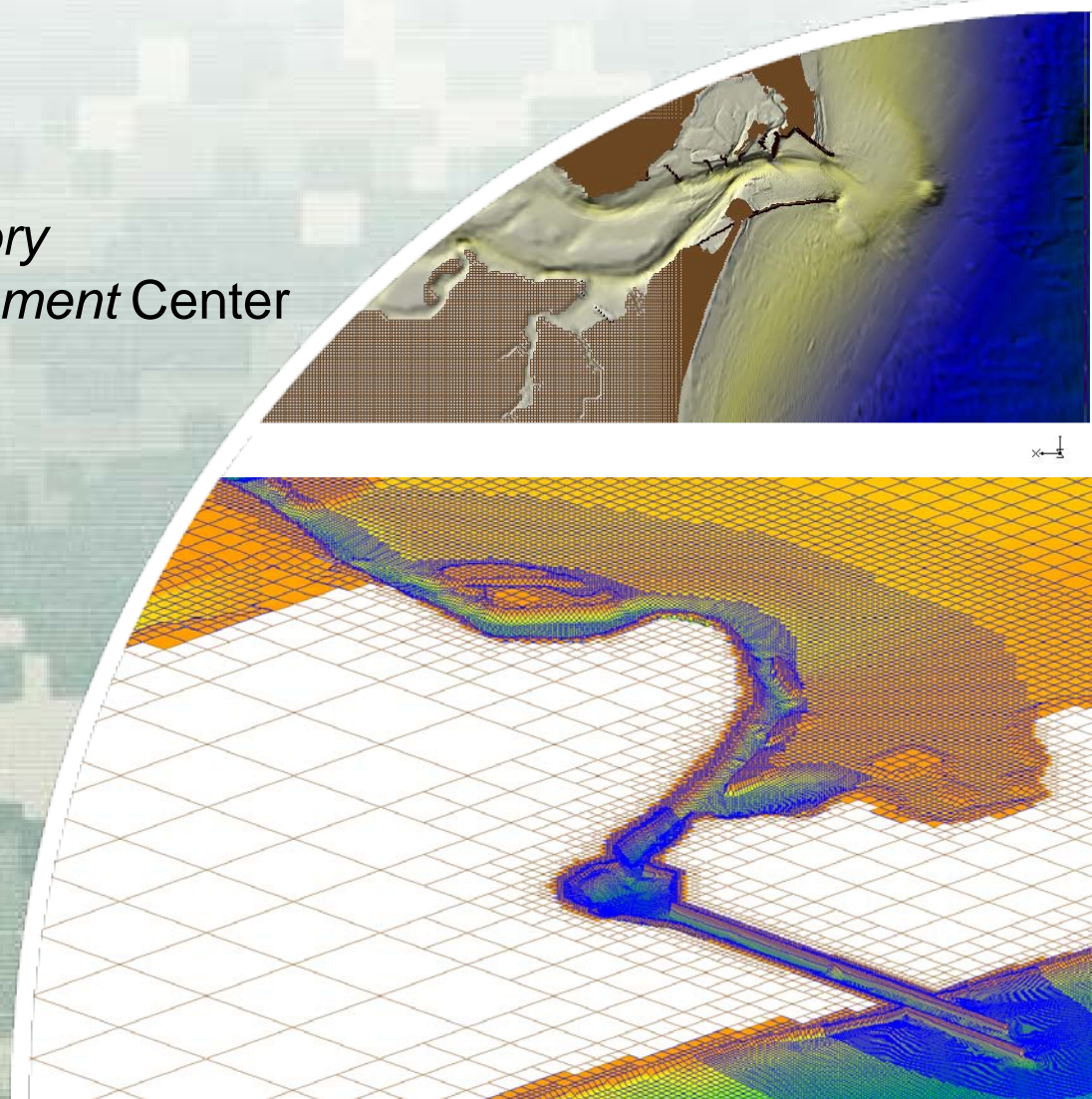
Alex Sánchez

Research Hydraulic Engineer

Coastal and Hydraulics Laboratory

Engineer Research and Development Center

June 19, 2012

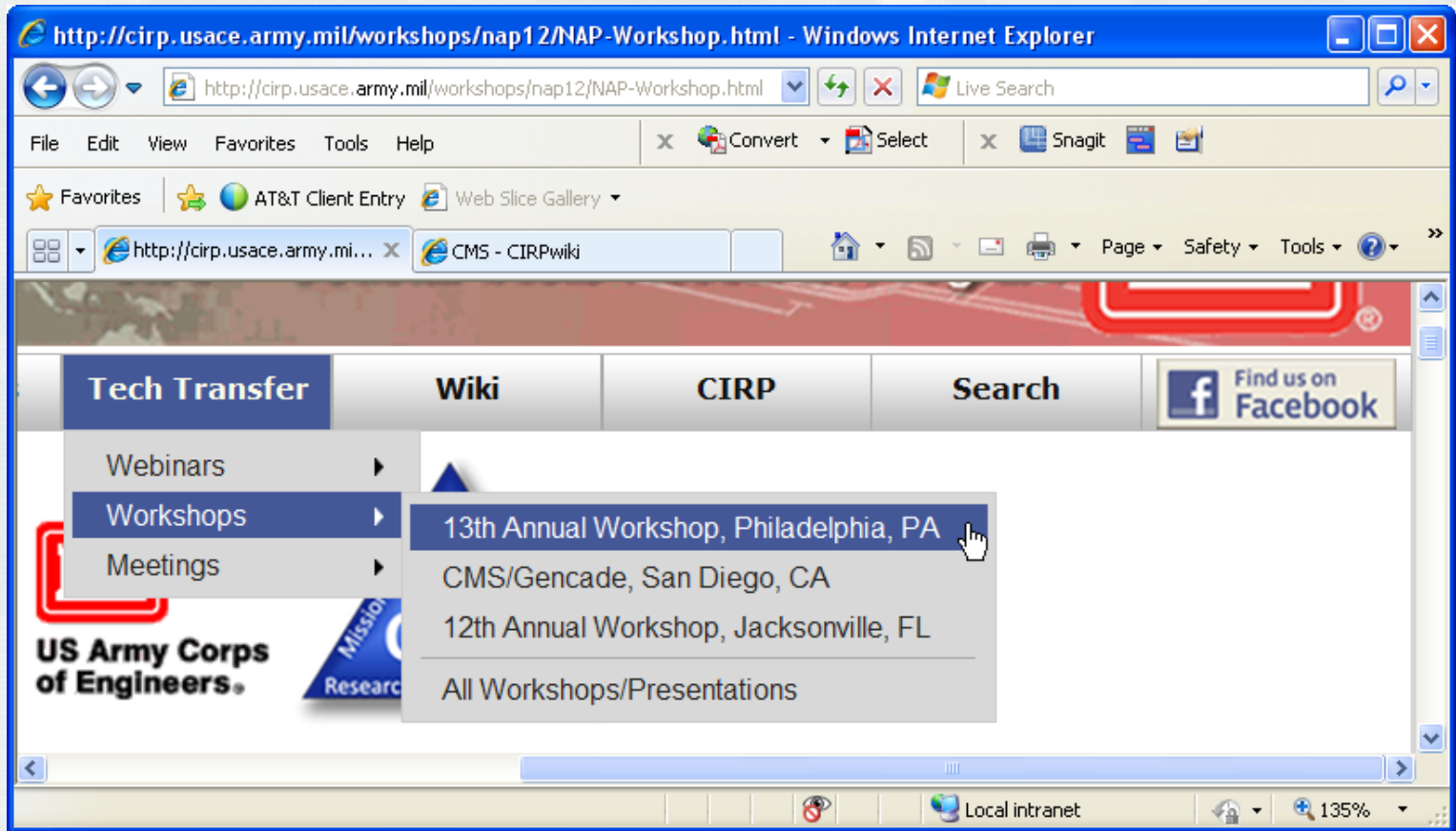


®

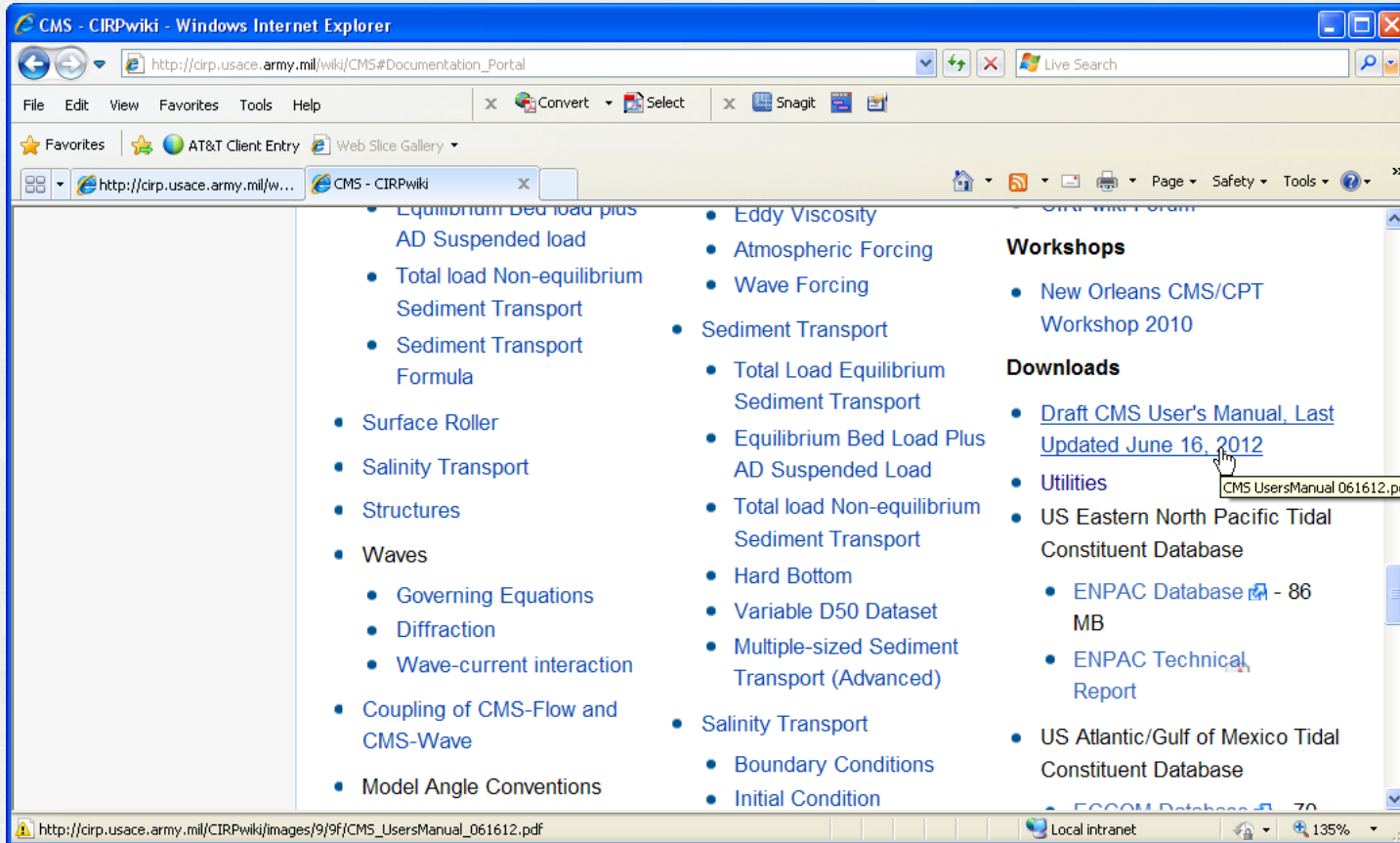
US Army Corps of Engineers
BUILDING STRONG®

- **18 June 2012 - Day 1**
 - Introduction to CMS (slides)
 - Overview of Documentation and Workshop Material – Read it!
 - Tips for preparing bathymetry and other scattersets
 - Tips for setting up and running
 - Hydrodynamics
- **19 June 2012 - Day 2**
 - Wind and Atmospheric Pressure
 - Steering
 - Initial and Boundary Conditions
 - Numerical Methods
 - Surface Roller
- **20 June 2012 – Day 3**
 - Sediment Transport
- **21 June 2012 - Day 4**
 - Sediment Transport - Continued
 - Advanced Output
 - Scripting
- **22 June 2012 - Day 5**
 - Debugging and Problem solving
 - Model Calibration
 - Post-processing
 - Upcoming features

- CMS-Flow data folder (same as workshop)



Draft CMS User Manual



<http://cirpwiki.info/wiki/CMS>