

# Coastal Modeling System

## *Advanced Topics*



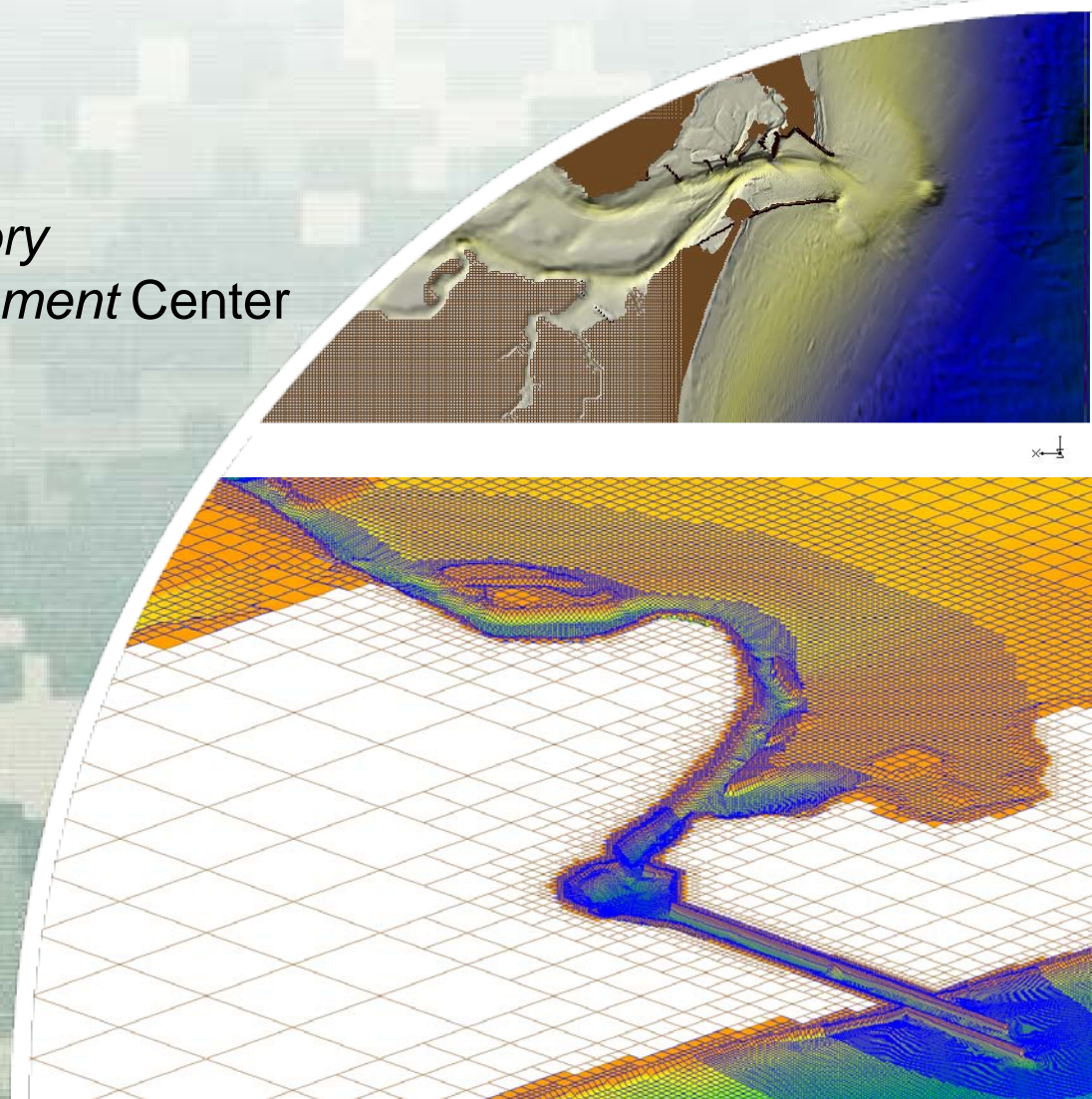
**Alex Sánchez**

*Research Hydraulic Engineer*

*Coastal and Hydraulics Laboratory*

*Engineer Research and Development Center*

June 20, 2012

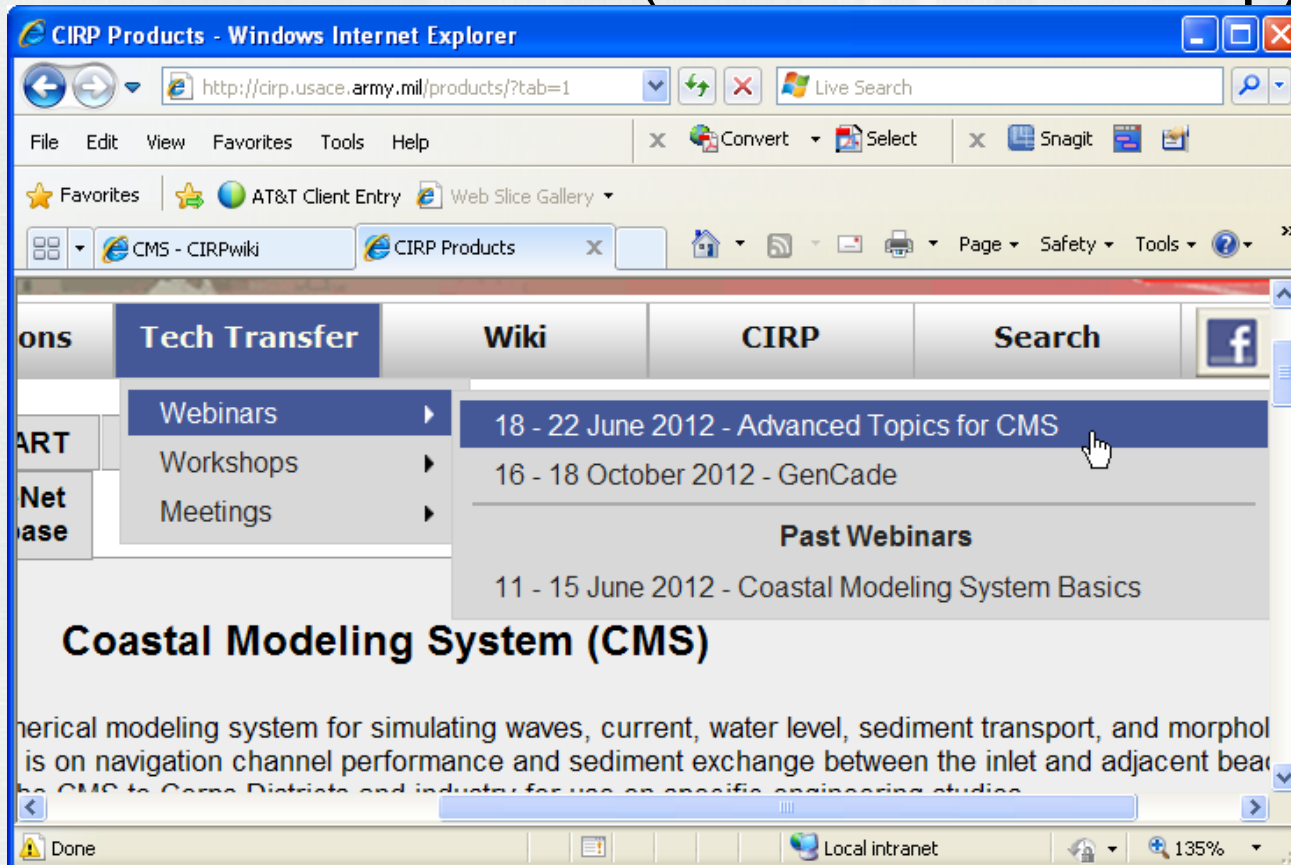


®

**US Army Corps of Engineers**  
**BUILDING STRONG**®

- **18 June 2012 - Day 1**
  - Introduction to CMS (slides)
  - Overview of Documentation and Workshop Material – Read it!
  - Tips for preparing bathymetry and other scattersets
  - Tips for setting up and running
  - Hydrodynamics
- **19 June 2012 - Day 2**
  - Wind and Atmospheric Pressure
  - Initial and Boundary Conditions
- **20 June 2012 – Day 3**
  - Surface roller
  - Salinity Transport
  - Sediment Transport
- **21 June 2012 - Day 4**
  - Numerical Methods
  - Advanced Output
  - Scripting
- **22 June 2012 - Day 5**
  - Problem Solving
  - Model Calibration
  - Post-processing
  - Upcoming features

- CMS-Flow data folder (same as workshop)



CIRP Products - Windows Internet Explorer

http://cirp.usace.army.mil/products/?tab=1

File Edit View Favorites Tools Help

Convert Select Snagit

Favorites AT&T Client Entry Web Slice Gallery

CMS - CIRPwiki CIRP Products

ons Tech Transfer Wiki CIRP Search

Webinars

Workshops

Meetings

18 - 22 June 2012 - Advanced Topics for CMS

16 - 18 October 2012 - GenCade

Past Webinars

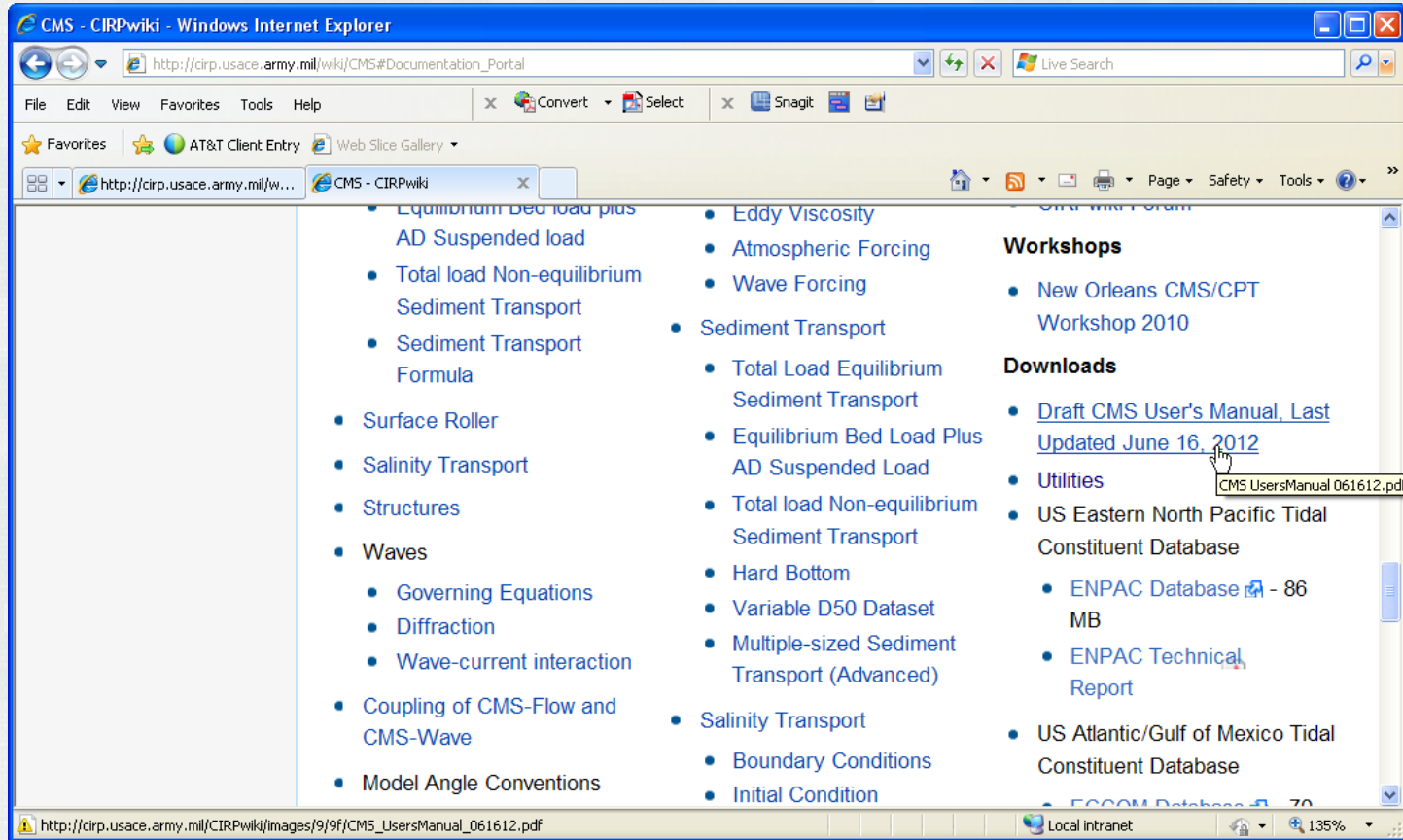
11 - 15 June 2012 - Coastal Modeling System Basics

## Coastal Modeling System (CMS)

nerical modeling system for simulating waves, current, water level, sediment transport, and morphol  
is on navigation channel performance and sediment exchange between the inlet and adjacent bea  
he CMS to Corps Districts and industry for use on specific engineering studies

Done Local intranet 135%

# Draft CMS User Manual



<http://cirpwiki.info/wiki/CMS>