



# ***CIRP IPR FY19***

## **COASTAL INLETS RESEARCH PROGRAM MANAGEMENT**

**Tanya M. Beck**

**District PDT Members**

**John Winkelman**

**Kathy Griffin**

HQ Navigation Business  
Line Manager

**Eddie Wiggins**

Technical Director



**US Army Corps  
of Engineers®**



# **CHL**

**COASTAL &  
HYDRAULICS  
LABORATORY**



**ERDC**  
ENGINEER RESEARCH & DEVELOPMENT CENTER

**DISCOVER | DEVELOP | DELIVER**

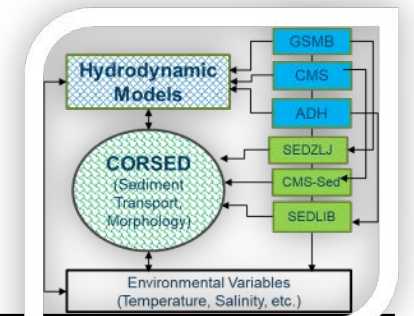
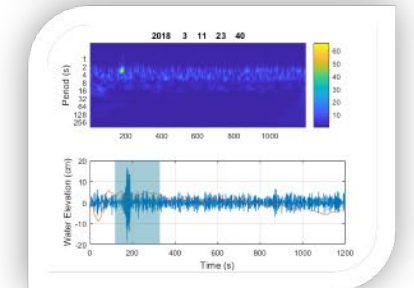
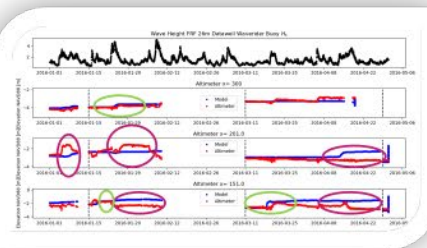
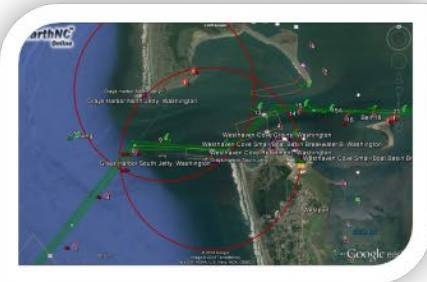
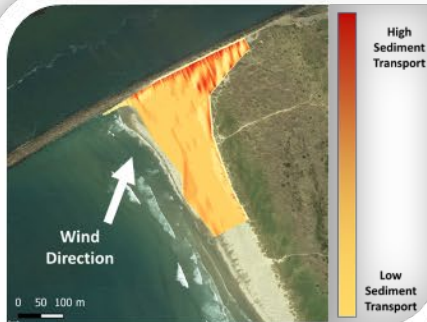


growing knowledge and new technology to better predict future channel shoaling.

Providing quantitative and practical predictive tools and data analytics to reduce the cost of dredging for Federal navigation projects and to maintain jetties.

Quantifying potential unintended consequences and identifying necessary mitigation.

Understanding future conditions for coastal navigation and providing engineering guidance.

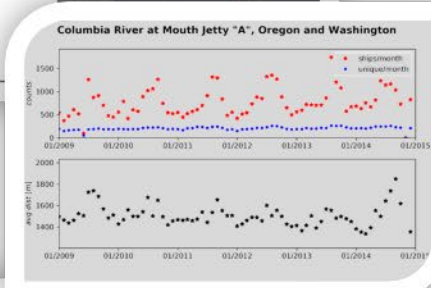
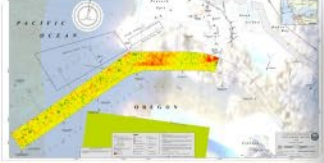




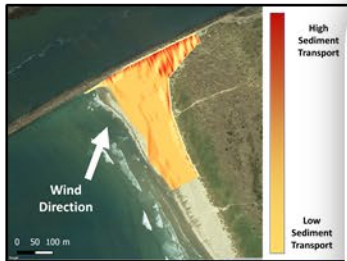
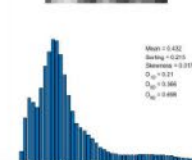
# FY19 Research



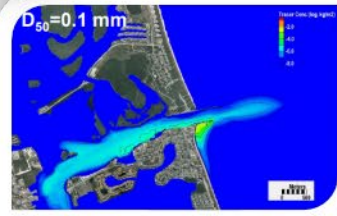
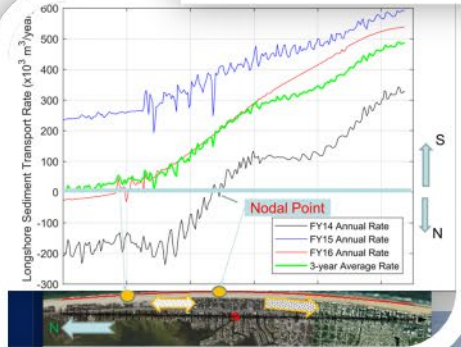
## Coastal Navigation Portfolio Management



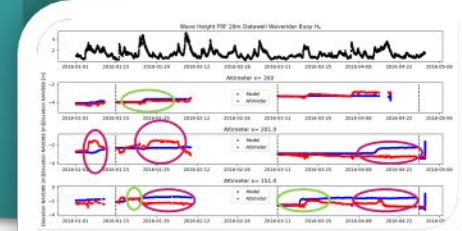
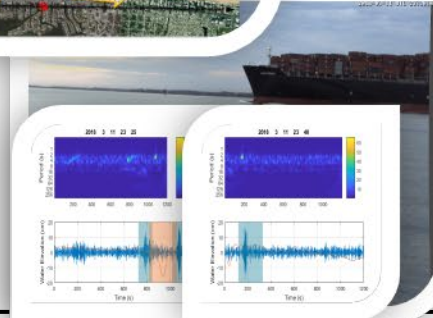
## Inlet Geomorphic Evolution



## Inlet Engineering Tools



## Coastal Modeling System



# CIRP Technology



Inlet Reservoir Model



WaveNet & TideNet



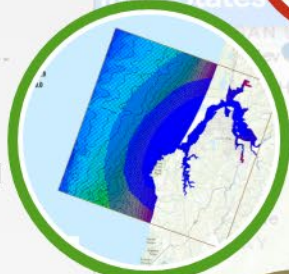
SBAS



CMS  
Coastal  
Modeling  
System



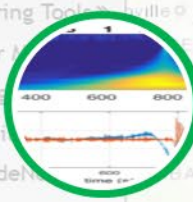
GenCade



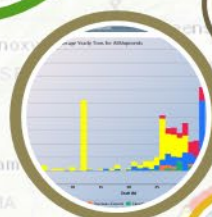
Sediment Mobility Tool



Bottom  
Boundary  
Layer Tool



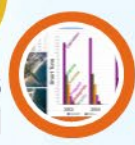
Vessel Wake  
Analysis Tool



CPT - Channel Portfolio Tool



CSAT - Channel Shoaling  
Analysis Tool



CSMART - Coastal Structures  
Management, Analysis, and Ranking Tool

## & Research Partners



Upcoming Technical Discussion Series

Morphology Change Modeling for Coastal South Carolina Using the Coastal Modeling System (CMS)

30 July 2019  
1300 - 1500 Eastern

Recent Events

Coastal Modeling System (CMS v5.1) basics using the Surface-water Modeling System (SMS 13.0)

May, 2019  
1300 - 1500 Eastern

CIRP Happenings

US Army Corps of Engineers • Engineer Research and Development Center •

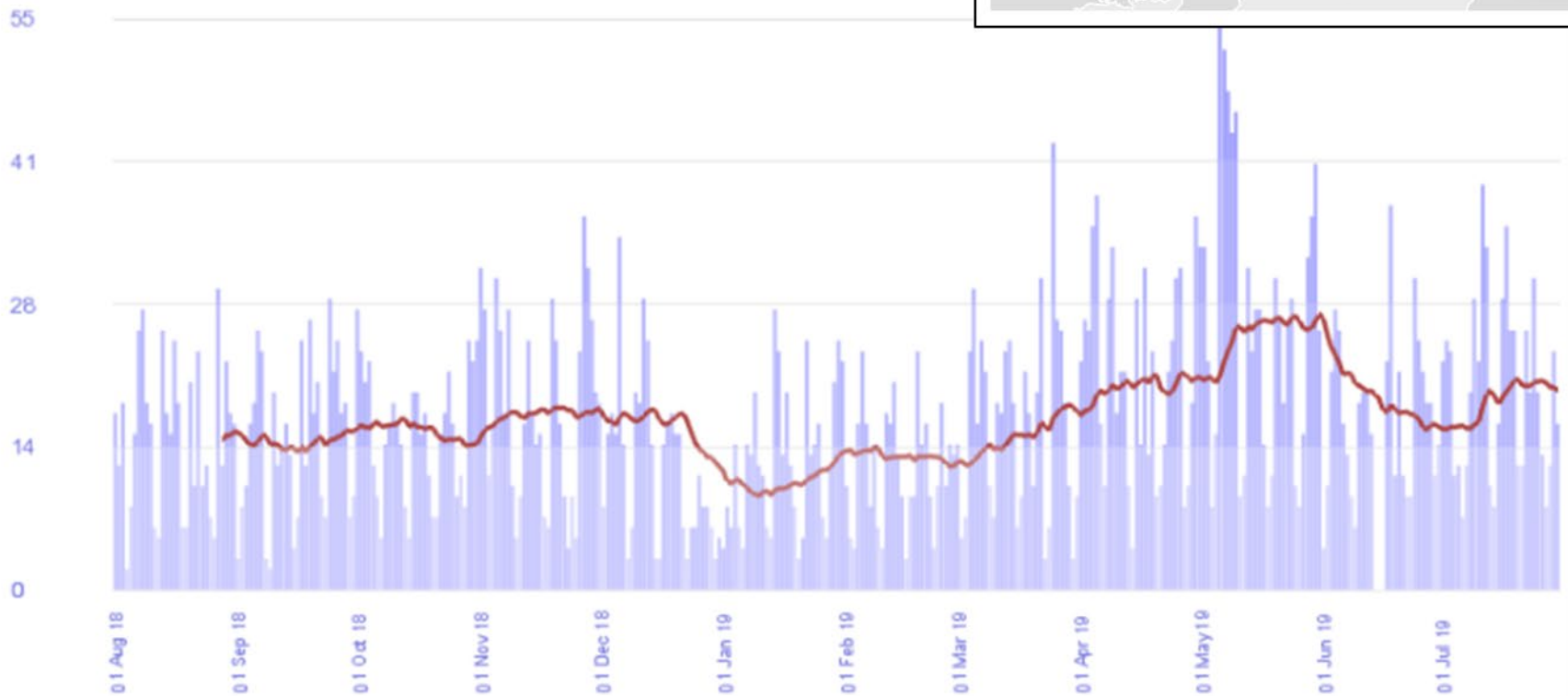




# CIRP Website

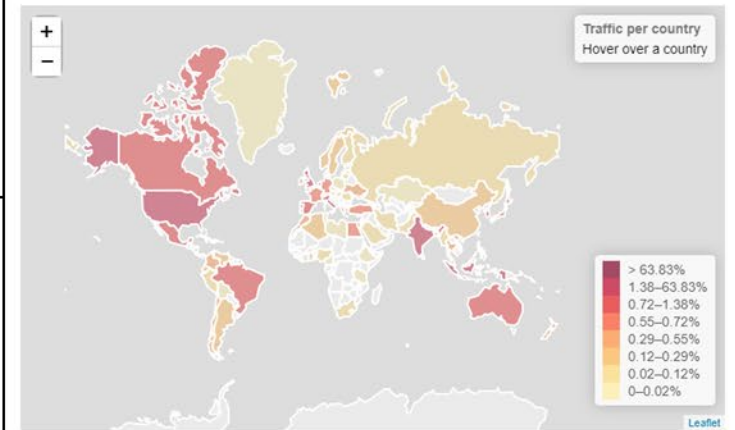
## TOTAL VISITS PER DAY

2018-08-01 to 2019-07-30 5,998 total visits

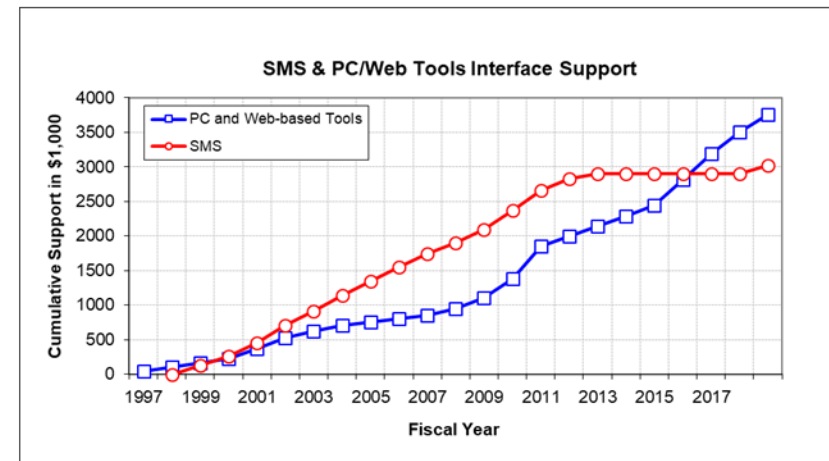
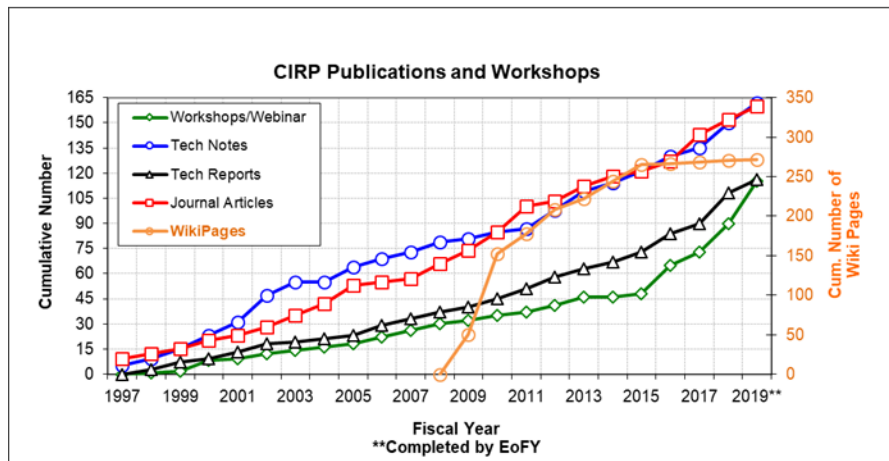
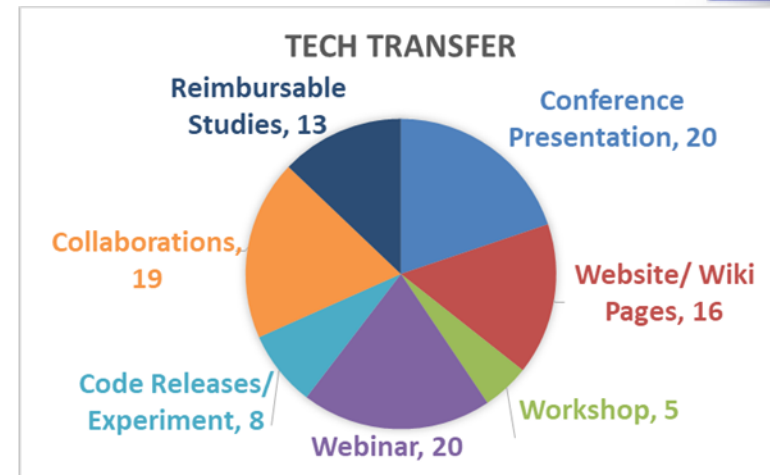
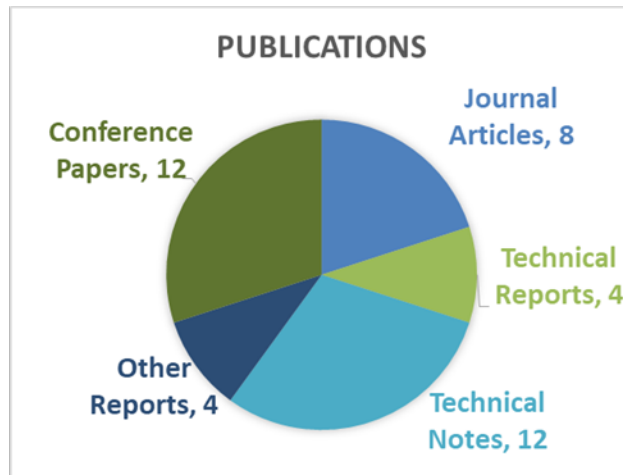


## CUMULATIVE TRAFFIC MAP

from August 2018 to July 2019



# Technology Transfer



# FY19 Program Summary

Mid-point  
Review  
Webinars



Work Unit	Title	Researcher(s)
<i>Coastal Modeling System</i>	Nearshore Processes (F&C/CODS/CIRP)	Johnson/Cohn
	Inlet and Nearshore Validation W/FRF Datasets	Johnson/Li
	Disaggregation of mixed sediment in near-bed transport	Smith
	CMTB & Optical Current Validation	Spicer
	CMS Tech Transfer	Li/Brown
	SMS GUI Development	Brown
	Modeling with Variable Winds	Lin/Demirbilek
	WaveNet & TideNet	Lin/Demirbilek
	CORSED (DOER/RSM/CIRP)	Gailani/Ding
<i>Inlet Engineering Toolbox</i>	Tools for Simulating Coastal Foredune Evolution Near Inlets	Brodie/Cohn
	Engineering tools to predict vessel wake induced channel erosion	Styles
	GenCade Model Improvements and Documentation	Styles
<i>Inlet Geomorphic</i>	Nearshore Berms	P
	Morphologic Modeling of Tidal Inlets	
<i>CNPM</i>	Coastal Navigation Portfolio Management	
<i>Program Mngt</i>	CIRP Administration & Tech Transfer	

## FY19 HH&C Proponents

Weston Cross, Colleen O'Connell LRB
John Wethington LRC
Katherine Labuhn LRE
Monica Chasten, Jeff Gebert NAP
Holly Carpenter SAC
Jason Engle, Kevin Hodgins, Kelly Legault, Drew Condon SAJ
Elizabeth Godsey, Richard Allen SAM
Rob Thomas, Shahidul Islam SWG
Rod Moritz, Jarod Norton NWP
Jessica Podoski, Tom Smith POH
Craig Conner SPN
Ann Sturm SPD
Dylan Davis SAD

\$2.7M

15 Statements of  
Need

35 ERDC Researchers  
& 20+ Field Proponents



# Summary

## FY19

- Advancing CSAT and AIS Vessel Navigation analytics
- Upgrades and validation to the CMS/CSHORE and GenCade
- Testing new aeolian transport code and remote sensing
- Nearshore Nourishment & Citizen Science
- Long-term Modeling to Optimize Dredging & Placement
- Tech Transfer – Workshops and webinars at all levels (Engineer, Divisions, HQ)

## FY20

- Received \$3.24M in research proposals
- Budget of \$2.46M
- Continued advancement of CIRP technology
- Integration to District/Division/BLM – Problem Solving!
- Cross-program Coordination