



Engineer Research and  
Development Center

# Future Capabilities of GenCade

**Ashley Frey**

Research Civil Engineer, Co-PI of the Inlet  
Engineering Toolbox work unit of CIRP



**US Army Corps  
of Engineers®**



# FY13 Activities

## CMS-Wave

Wind input, wave generation & growth, wave transformation, diffraction, reflection, run-up, setup, overtopping, structures, surface roller



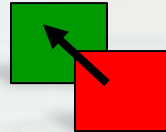
**GenCade**

*Option for GenCade to accept forcing from an external wave model*

**GenCade**

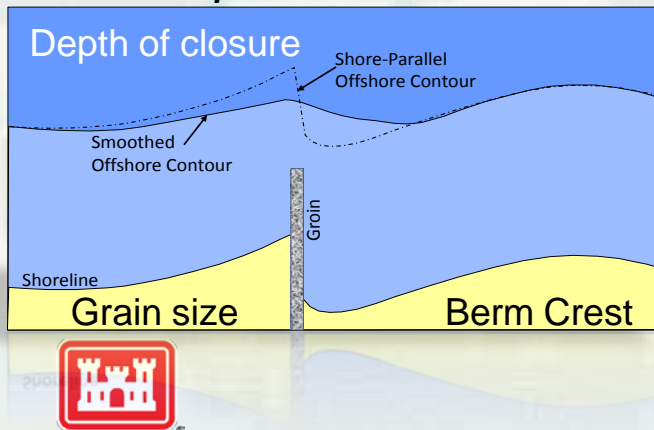


*SBAS Arc10*

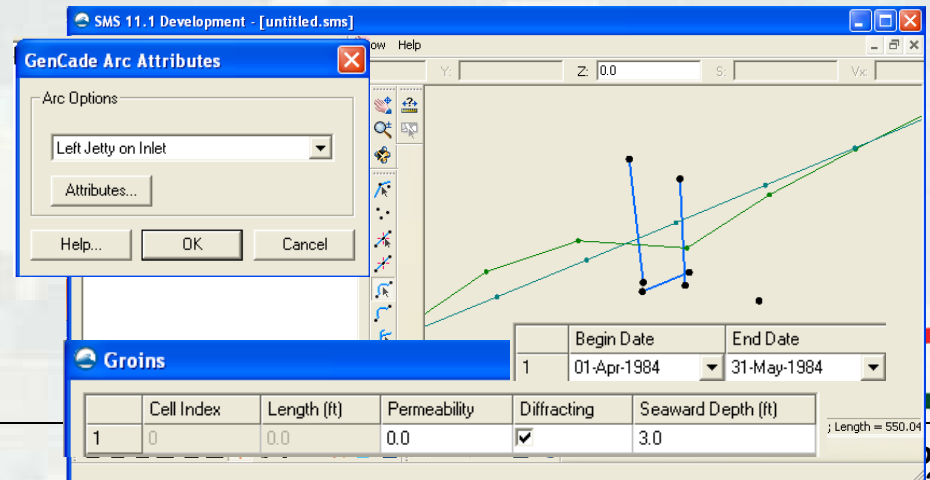


*GenCade output used as input to create an SBAS Calculated Sediment Budget*

*Variable alongshore parameters*



*Variable structures and failure*



BUILDING STRONG®

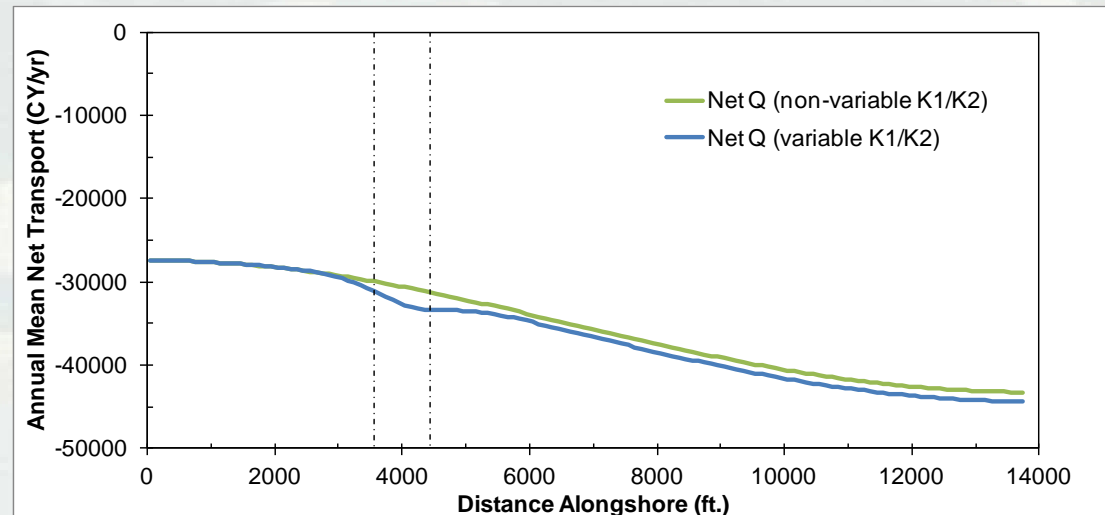
# FY13 Documentation

## ***Wiki-TN: Standard Methodology for Calibration and Validation***

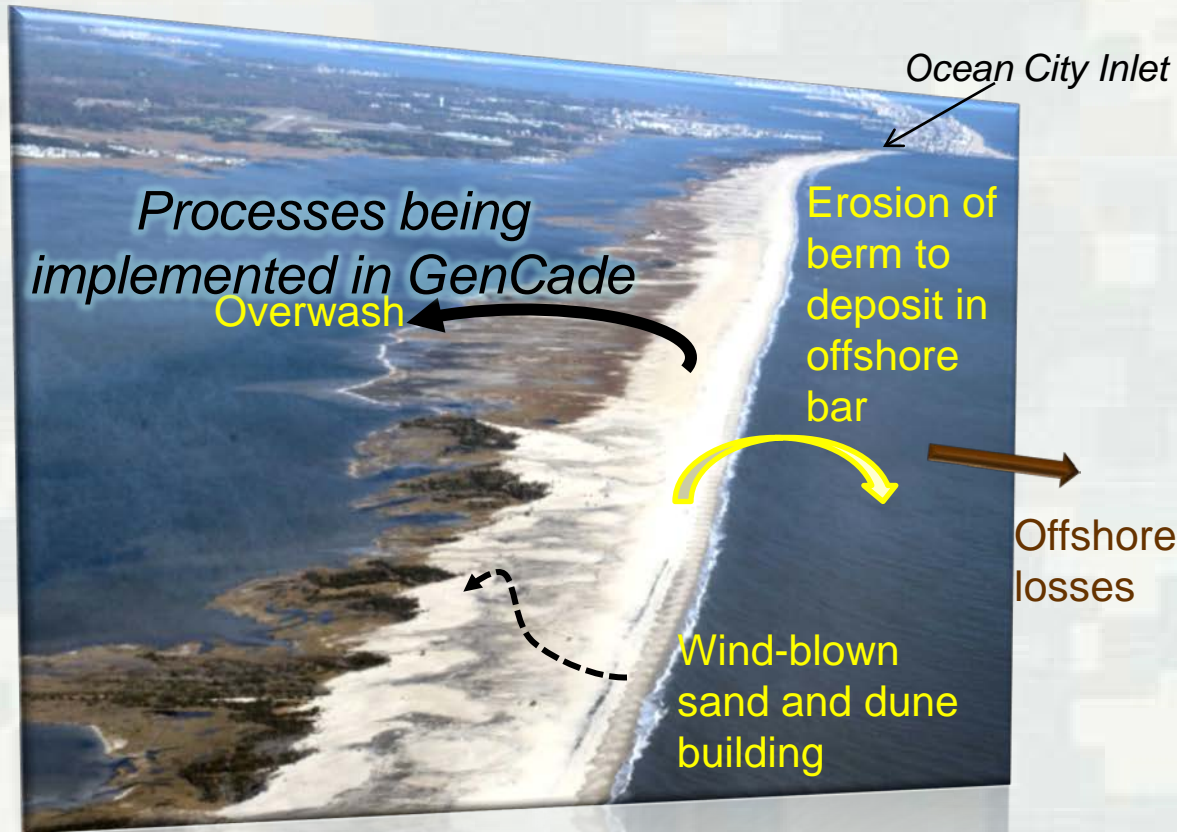
- *Statistical toolkit*
- *Recommended statistics for acceptable Cal/Val*
- *Standard, unified approach*

## GenCade V2 Release

- Variable parameters and structures
- Code enhancement
- Output files for SBAS
- Updated documentation for V2 (wiki-TN or TR)



# FY13 & Beyond – Cross-shore Transport

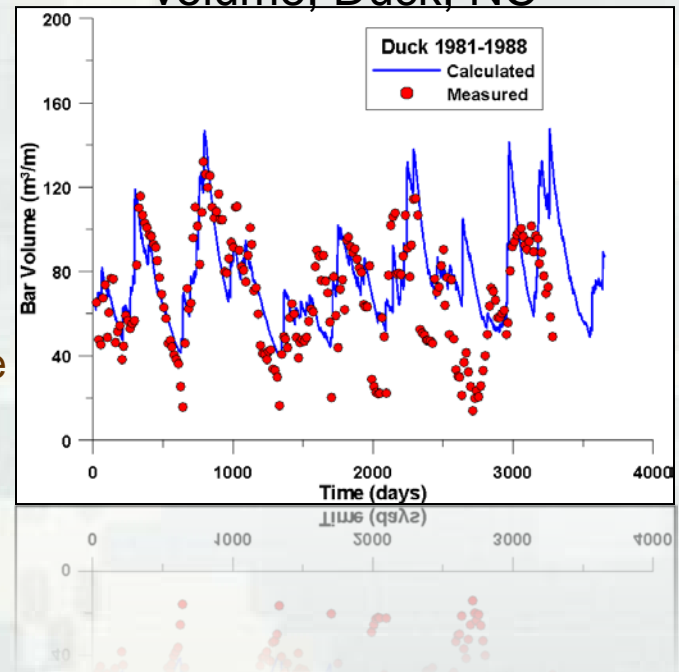


Assateague Island, MD



BUILDING STRONG®

Example comparison between measured and calculated bar volume, Duck, NC

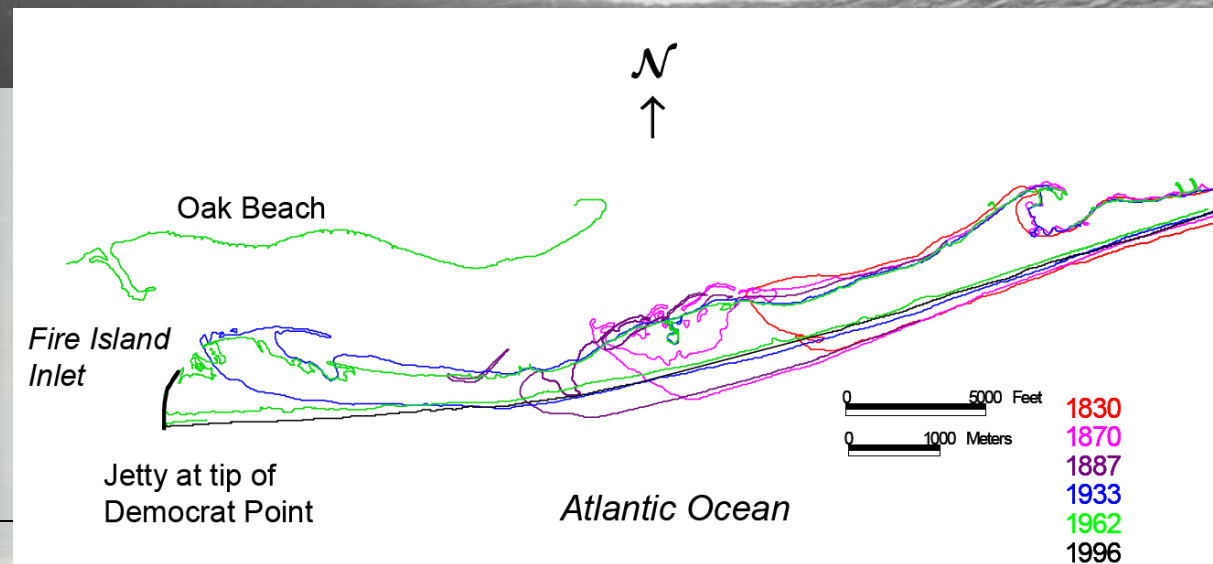
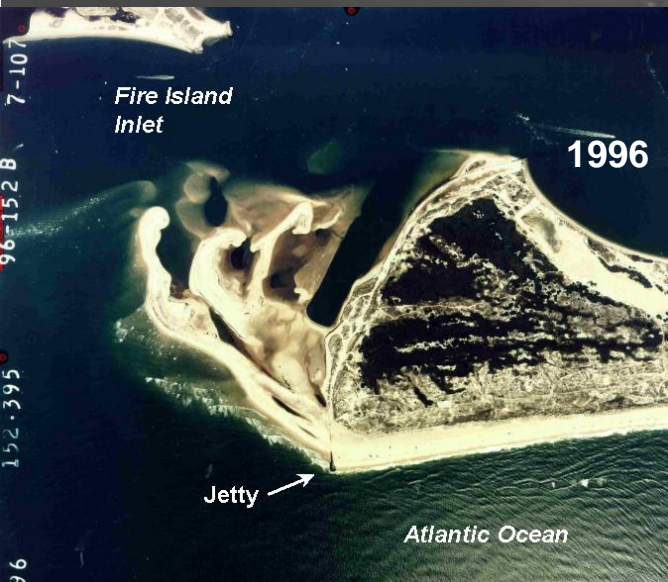


ERDC

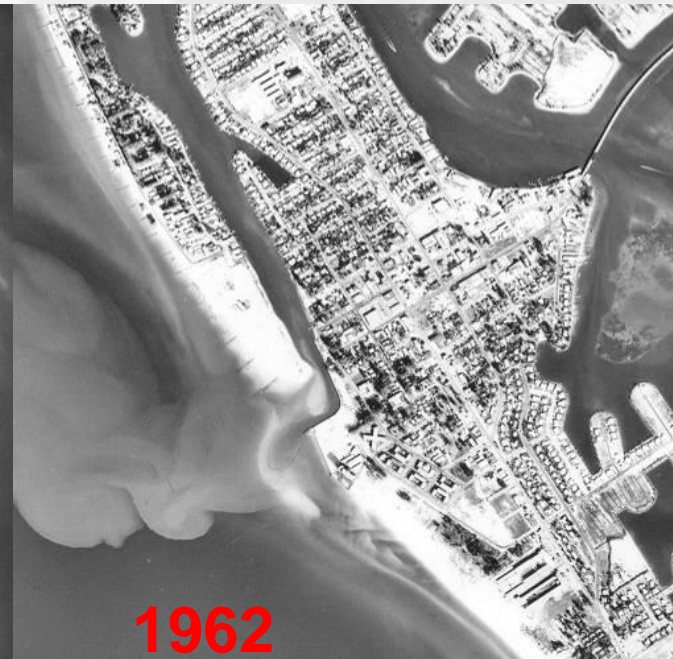
Innovative solutions for a safer, better world



# FY13 & Beyond – Spit Growth



# FY13 & Beyond - Inlet and Barrier Migration



BUILDING STRONG®



*Innovative solutions for a safer, better world*