

WaveNet/TideNet: Web-based Metocean Data Access & Analyses Tools for Support of USACE Missions

Description:

- Provide tabular and graphical metocean data (wind, water level, wave and tide) for coastal, ocean, and marine engineering studies, numerical models, and project planning and design reports.
- GIS and ESRI mapping interface used to select, query, view, extract, plot and analyze data from available sources in/around US ocean and coastal waters and its territories
- Generate direct input (*.eng) file for CMS-Wave

Accessibility: These tools can be accessed with any web browser on an ACE-IT computer from this web address:

https://140.194.110.113/WaveNet_dev

and are free for all USACE employees on Corpsnet

POCs:

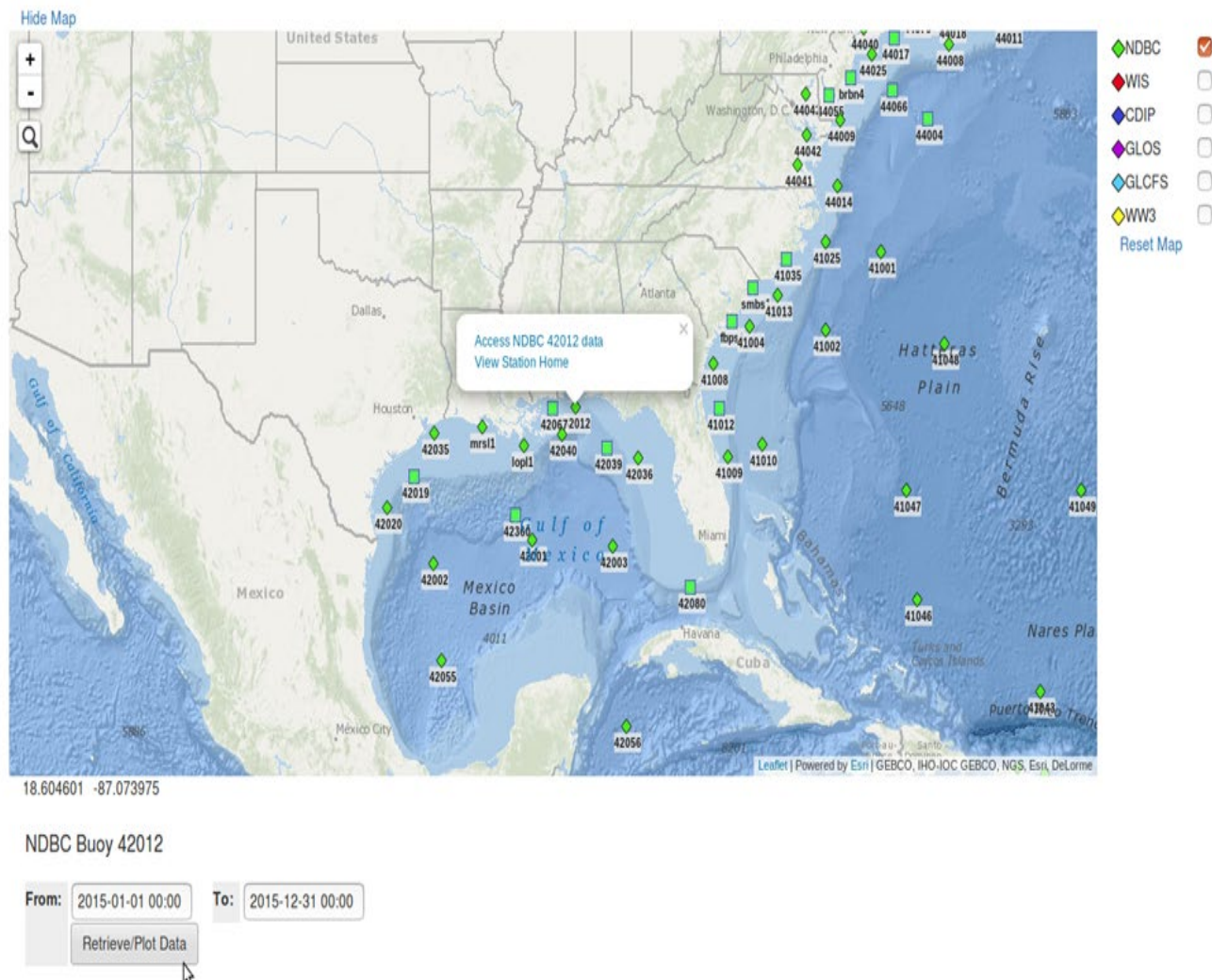
Zeki Demirbilek and Lihwa Lin

Zeki.Demirbilek@usace.army.mil

Lihwa.Lin@usace.army.mil



WaveNet/TideNet (cont.)



Access and retrieve wind & wave data via WaveNet for 2015 at NDBC Buoy 42012

WaveNet/TideNet (cont.)

Hide Map

Map showing WaveNet/TideNet stations (WIS, CDIP, GLOS, GLCFS, WW3) along the Gulf of Mexico coast. A pop-up window displays station data for WIS 73161, including a calendar for December 2014 and a time selection interface.

Access WIS 73161 data
View Station Home

Calendar: Dec 2014

Su	Mo	Tu	We	Th	Fr	Sa
		1	2	3	4	5
6	7	8	9	10	11	12
13	14	15	16	17	18	19
20	21	22	23	24	25	26
27	28	29	30	31		

Time: 00:00

Hour:

Minute:

Done

28.579698 -86.354828

WIS station 73161 data available for y

From: 2014-01-01 00:00 To: 2014-12-31 00:00

Retrieve/Plot Data

Legend:

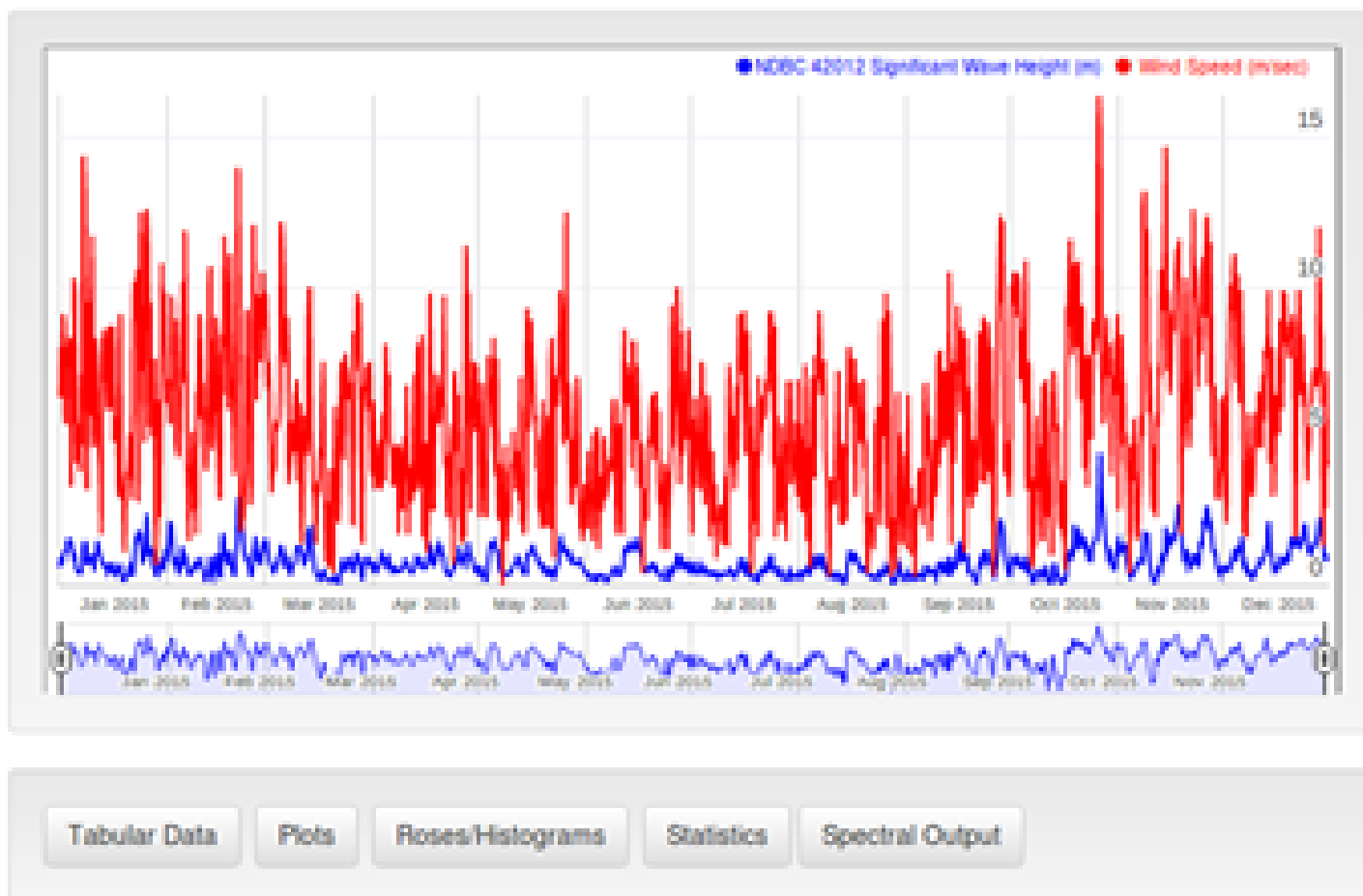
- ☐ NDBC
- ☒ WIS
- ☐ CDIP
- ☐ GLOS
- ☐ GLCFS
- ☐ WW3

Reset Map

Leaflet | Powered by Esri | GEBCO, NOAA NGDC, IHO-IOC GEBCO, NGS, Esri, DeLorme

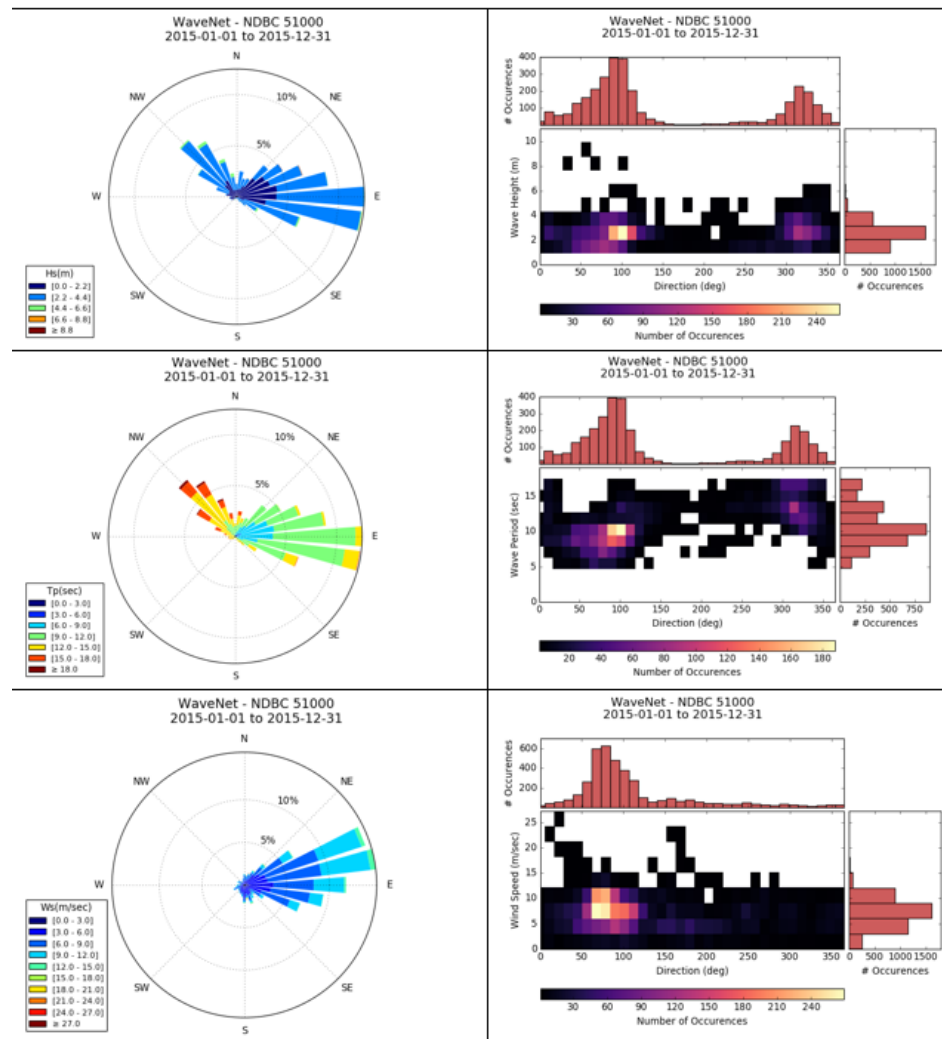
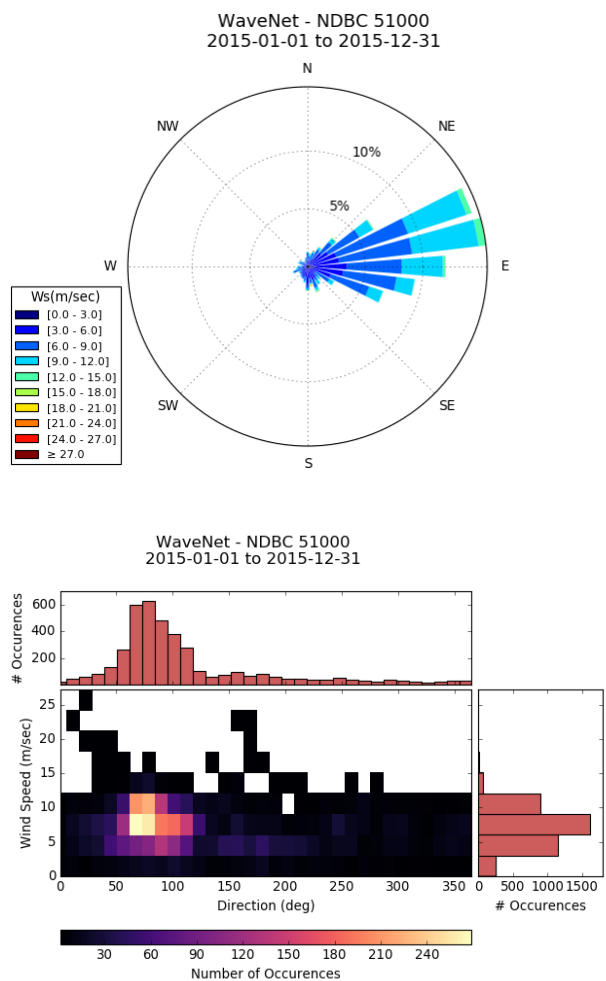
Select the Source, Start and End dates & times to download data

WaveNet/TideNet (cont.)



Time series of wind and wave data retrieved

WaveNet/TideNet (cont.)



Products from different types of analyses